



**The Way To Fish®**



**Fishing & Outdoor Products**

# LINE PULLER 2500



Watch the  
Scotty Line Puller  
in action



Each Scotty Line Puller comes with a 2 year Warranty, backed by over 60 years of manufacturing experience and unbeatable customer service.

See page 12 for optional  
mounting systems

## Standard Features

- Compact size makes for easy stowing
- Heavy duty, high torque 12v Motor
- Low amperage draw
- 120 ft./min. retrieval speed
- Accommodates 1/4" - 3/8" line
- Pulls 1 crab trap or up to 4 prawn traps
- Heavy duty stainless steel and composite construction
- Swiveling head for increased versatility
- Scotty/Marinco™ plug and receptacle included
- Easy access on/off switch
- No. 1023 mounting bracket included
- Fully assembled and factory tested



## 2515 Line Puller Stow-Away Bag

This durable stow-away bag protects your Scotty Line Puller from the elements when not in use. It is water resistant, heavy duty inside lining and breathing holes help keep your gear running, and looking like new all season long.

Made from a rugged polyester blend, it has durable, spiked rubber feet on the bottom of the bag that help protect the 2500 when placing it down on abrasive docks, boat decks and more.

Bag Dimensions: 24" x 10" x 14"



# What is a Downrigger?

## Fight the fish, not the fishing gear!

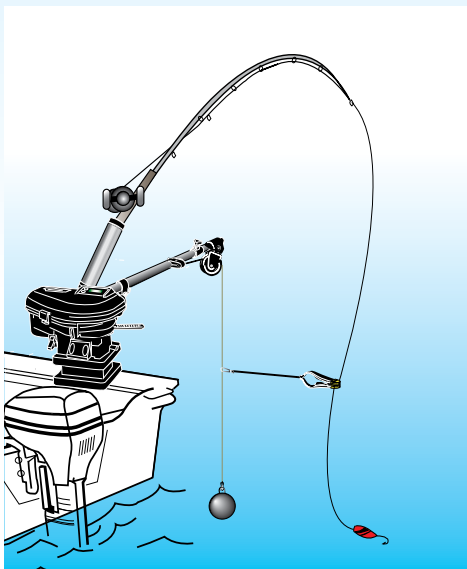
Downriggers were created for one principal reason: to allow fishermen to troll their lures at a specific depth. Years of testing and practical use had shown that a moving bait or lure in the water, trolled at the depth where fish were present, was the best way to ensure a hookup and get results. Downriggers improved both trolling results, and the fun factor - they put the 'sport' back in sport fishing.

The earliest downriggers were very simple in form, generally consisting of a spool of wire mounted to the boat with a heavy weight hung on the end of the wire. The lure or bait was attached directly to the downrigger weight and did not release when a fish struck - the fisherman had to wind up both the weight and the fish.

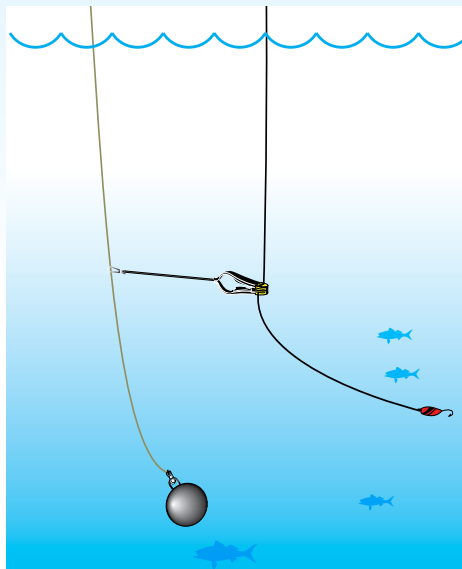
This concept of deep trolling became popular with sport fishermen when the idea of attaching a rod to the downrigger, by means of a release clip, was introduced.

A release clip is attached to the wire and then the fishing line from the rod is clipped into the release. The downrigger weight is then lowered to precisely the depth required. When a fish hits, the line is released from the downrigger wire, leaving the heavy weight on the downrigger. The angler is then free to fight the fish on the rod and reel alone, without the added drag of heavy lines and trolling weights used in the past.

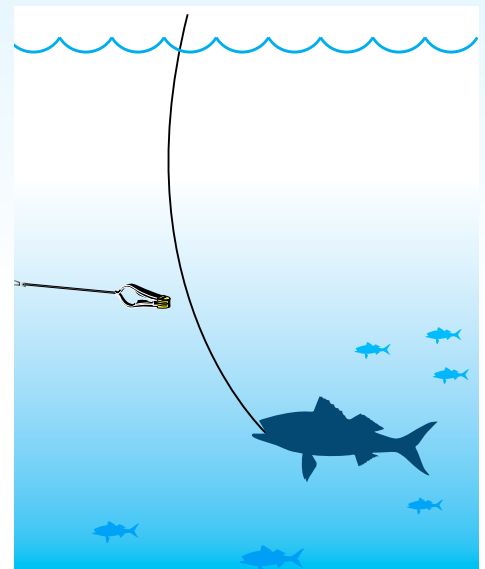
Scotty introduced its first downrigger over 40 years ago and now produces the most complete range of downriggers and accessories in the world.



Clip your fishing line to the downrigger line using the patented Scotty Power Grip line release.



Loosen the drag on your fishing reel and carefully let the downrigger line out to a specific depth.



When a fish strikes it pulls your fishing line out of the release and you are free to fight the fish on the rod and reel.

# HIGH PERFORMANCE downriggers



*“Fastest retrieval rates in the World”*



Each Scotty Downrigger comes with a Limited Lifetime Warranty. The best warranty in the industry, backed by over 60 years of manufacturing experience and unbeatable customer service.

Scotty Depthpower Electric Downriggers have reached the highest performance and reliability standards ever, while remaining competitively priced. Thousands of fishermen now enjoy the superior speed, power and years of reliability that only Scotty offers. From custom designed marine motors to the final quality control tests, Scotty performance is unmatched in the industry.

## Standard Features

- Unbeatable pulling power lifts 20 lb. weights with ease at 260 ft./min. - 12 lb. weights lift at 304 ft./min
- Illuminated, resettable, sealed and silent digital line counter
- 300 ft. of 180 lb. HP Test, stainless steel downrigger wire
- Stainless steel jacketed adjustable Rocket Launcher rod holder
- 16 position swivel pedestal mount
- Weight storage hook
- Tilt-up boom
- Multi-position auto-stop included. Use the No. 1008 stopper beads (included) to stop at any pre-set position
- Power Grip Plus line release
- Clutch brake with the largest braking in the industry. In the event of a bottom hang-up, it will pay-out to avoid losing gear
- 1/2" Kevlar drive belt by Optibelt™ - The same belts used by superior European auto manufacturers
- Full saltwater protection
- Fully assembled and factory tested

See page 12 for optional mounting systems

Weight	12 lb.	15 lb.	20 lb.
Retrieval Speed	304 ft./min.	295 ft./min.	260 ft./min.

## 2106 High Performance 36"- 60"

The performance downrigger of choice for serious fishermen. Unmatched in power, performance and reliability.

- 36"- 60" long, 1 1/4" dia. telescoping stainless steel boom (collapses to 36" for storage)
- Illuminated resettable, sealed and silent digital line counter
- Heavy duty, high speed pulling power
- 16 position swivel pedestal mount included
- Adjustable stainless steel jacketed Rocket Launcher rod holder
- Power Grip Plus line release
- 300 ft. of 180 lb. test, premium stainless steel downrigger wire



## 2106B High Performance 36"- 60" (Braided Line)

The strongest braid Scotty has to offer, pre-wound onto our heavy duty, high performance downrigger.

- 300 ft. of 250lb. test Premium Fiber Braided Downrigger Line
- Illuminated resettable, sealed and silent digital line counter
- Heavy duty, high speed pulling power
- 36"- 60" long, 1 1/4" dia. telescoping stainless steel boom (collapses to 36" for storage)
- 16 position swivel pedestal mount included
- Adjustable stainless steel jacketed Rocket Launcher rod holder
- Power Grip Plus line release



## 2116 High Performance ProPack Tournament Series 36"- 60"

The number one choice in performance downriggers for the charter captain. Equipped with heavy duty, adjustable dual rod holders and all the other great features of our heavy duty, high performance downriggers.

- 36" - 60" long, 1 1/4" dia. telescoping stainless steel boom (collapses to 36" for storage)
- Illuminated resettable, sealed and silent digital line counter
- Heavy duty, high speed pulling power
- 16 position swivel pedestal mount included
- Dual adjustable stainless steel jacketed Rocket Launcher rod holder
- 2 Power Grip Plus line releases
- 300 ft. of 180 lb. test, premium stainless steel downrigger wire



## 3015 Electric Downrigger Cover

Durable cover protects your downrigger from the elements. Fits all models (Downrigger not included)



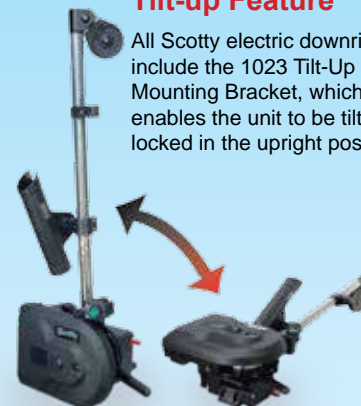
# DEPTHPOWER downriggers



Each Scotty Downrigger comes with a Limited Lifetime Warranty. The best warranty in the industry, backed by over 60 years of manufacturing experience and unbeatable customer service.

## Tilt-up Feature

All Scotty electric downriggers include the 1023 Tilt-Up Mounting Bracket, which enables the unit to be tilted and locked in the upright position.



## Model 1106 Depthpower



Includes Power Grip Plus line release

Scotty Depthpower Electric Downriggers have the highest performance and reliability standards ever, while remaining competitively priced. Thousands of fishermen now enjoy the superior speed, power and years of reliability that only Scotty offers. From custom designed marine motors to the final quality control tests, Scotty performance is unmatched in the industry.

## Standard Features

- Serious pulling power. Ample spare power for pulling heavy weights out of snags, weeds or kelp
- Fully adjustable descent speed - 5 ft./min. to over 300 ft./min. with low amperage retrieval rates (see table below)
- 250 ft. of premium 150 lb. test stainless steel downrigger cable
- Spray-protected, positive-drive depth counter
- Kevlar belt driven
- Multi-position auto-stop included. Use the No. 1008 Stopper Beads (included) to stop at any pre-set position
- The lowest amperage draw of any downrigger made. Less than one third the battery draw than some of the competition
- Adjustable Rodmaster II rod holder
- 16 position swivel pedestal mount included
- Marine grade stainless steel boom
- Power Grip Plus line release
- Fully assembled and factory tested
- Full saltwater protection



Weight	7 lb.	10 lb.	15 lb.	20 lb.
Retrieval Speed	235 ft./min.	222 ft./min.	203 ft./min.	185 ft./min.
Amperage Draw	4 amps	5 amps	8 amps	11 amps

See page 12 for optional mounting systems

### 1099 Compact Depthpower 24"

All the performance features of the larger models in a compact size.

- 24" long, 1" diameter stainless steel boom
- 250 ft. of premium 150 lb. test stainless steel downrigger cable
- Boom mounted Rodmaster II rod holder
- 1 Power Grip Plus line release



### 1101 Depthpower 30"

Designed for heavy duty use, this unit will handle long hours and heavy weights in tough conditions.

- 30" long, 1 1/4" diameter stainless steel boom
- 250 ft. of premium 150 lb. test stainless steel downrigger cable
- Boom mounted No. 350 Rodmaster II rod holder
- 16 Position swivel pedestal mount
- 1 Power Grip Plus line release



### 1106 Depthpower 36"- 60"

The most popular Scotty Electric, with a boom that telescopes for extra reach and collapses for extra storage. Makes a great "big boat" rigger.

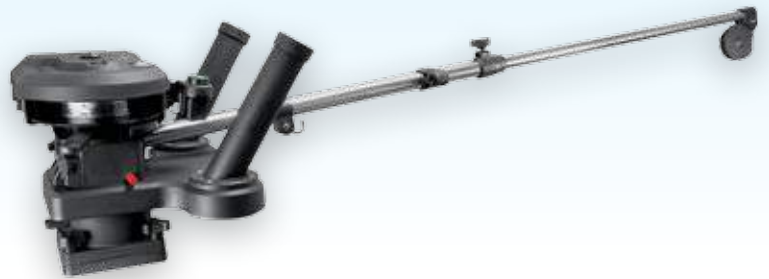
- 36" - 60" long, 1 1/4" dia. telescoping stainless steel boom (collapses to 36" for storage)
- 250 ft. of premium 150 lb. test stainless steel downrigger cable
- 16 position swivel pedestal mount included
- Boom mounted Rodmaster II rod holder
- 1 Power Grip Plus line release



### 1116 Propack 36"- 60"

The top choice of charter captains. This unit gives the versatility of a telescoping boom with the dual rod holder option & pedestal swivel base.

- 36" - 60" long, 1 1/4" dia. telescoping stainless steel boom (collapses to 36" for storage)
- 250 ft. of premium 150 lb. test stainless steel downrigger cable
- Dual rod holder
- 16 position swivel pedestal mount included
- 2 Power Grip Plus line releases
- Weight storage hook



### 1117 Big Water ProPack Tournament Series 36"- 60"

This big water unit has the ultimate combination of features: telescoping boom, fully adjustable dual Rodmaster II rod holders, height extenders and pedestal swivel base.

- 36" - 60" long, 1 1/4" dia. telescoping stainless steel boom (collapses to 36" for storage)
- 250 ft. of premium 150 lb. test stainless steel downrigger cable
- Rodmaster II rod holders
- Height Extenders
- 16 position swivel pedestal mount included
- 2 Power Grip Plus line releases
- Weight storage hook



# MANUAL downriggers



**Model 1090 Longarm  
Downrigger**

## **Tilt-up Feature**

All Scotty Strongarm & Longarm downriggers include the 1023 tilt-up mounting bracket which enables the unit to be tilted and locked in the upright position



Each Scotty Downrigger comes with a Limited Lifetime Warranty. The best warranty in the industry, backed by over 60 years of manufacturing experience and unbeatable customer service.



Includes Power Grip  
Plus line release

**Scotty Manual Downriggers have been the preferred choice of fishermen for over forty years. They are engineered with a number of exclusive features contained in no other downrigger**

## **Standard Features**

- High speed 2 ft. per turn spool coupled with an extended handle for extra leverage, which makes cranking a breeze
- Spray-protected, positive-drive depth counter
- Fully adjustable Rodmaster II boom mounted rod holder
- Marine grade stainless steel boom
- 1023 tilt-up mounting plate included
- Clutch brake with the largest braking in the industry. In the event of a bottom hang-up, it will pay-out to avoid losing gear
- Fully adjustable descent speed
- Power Grip Plus line release
- Full saltwater protection
- Fully assembled and tested



### 1080 Strongarm 24"

This downrigger has outstanding features for small and intermediate size boats.

- 24" long, 1" diameter stainless steel boom
- 200ft. of premium 150 lb. stainless steel downrigger cable
- Boom mounted Rodmaster II rod holder
- Power Grip Plus line release



### 1085 Strongarm 30"

The heavy duty workhorse of the Scotty manual lineup. Excellent for the intermediate size boat.

- 30" long, 1 1/4" diameter stainless steel boom
- 200ft. of premium 150 lb. stainless steel downrigger cable
- Boom mounted Rodmaster II rod holder
- Power Grip Plus line release



### 1090 Longarm 36"-60" Telescoping Boom

Makes an ideal "big boat" downrigger with all the deluxe features.

- 36" - 60" long, 1 1/4" dia. telescoping stainless steel boom (collapses to 36" for storage)
- 200ft. of premium 150 lb. stainless steel downrigger cable
- Boom mounted Rodmaster II rod holder
- Power Grip Plus line release



### 1091 Longarm 36" - 60" Combo Pack

Ideal for big boats. All the same features as the 1090 plus the pedestal Swivel Mount.

- 36" - 60" long, 1 1/4" dia. telescoping stainless steel boom (collapses to 36" for storage)
- 200ft. of premium 150 lb. stainless steel downrigger cable
- Boom mounted Rodmaster II rod holder
- 16 position swivel pedestal mount
- Power Grip Plus line release



# COMPACT MANUAL downriggers



**Model 1050  
Depthmaster**

Each Scotty Downrigger comes with a Limited Lifetime Warranty. The best warranty in the industry, backed by over 60 years of manufacturing experience and unbeatable customer service.

Includes Power Grip Plus line release

The Depthmaster and Depthking models offer more value for the fisherman than anything else on the market. The price and operating features of these units beat the competition hands down!

## Standard Features

- Spray protected, positive drive depth counter
- Adjustable boom-mounted Rod Master II rod holder
- 23" long, 3/4" diameter stainless steel boom
- 200' of premium 150 lb stainless steel downrigger cable
- Quick-slide deck mounting bracket
- Clutch brake with the largest braking in the industry. In the event of a bottom hang-up, it will pay-out to avoid losing gear

### 1050 Depthmaster 23"

Compact, versatile and reliable, the perfect introductory downrigger. One foot per turn spool operates easily with either hand from a sitting position in the boat.

- 200' of premium 150 lb stainless steel downrigger cable
- Boom mounted Rodmaster II rod holder

### 1050 MP Masterpack 23"

The 1050 Depthmaster rigged with a portable 1021 clamp mount.

- 200' of premium 150 lb stainless steel downrigger cable
- Boom mounted Rodmaster II rod holder
- Anodized aluminum clamp for added versatility

### 1060 Depthking 23"

Includes a high speed 2 ft. per turn spool. The spool also comes equipped with an extension handle for extra leverage with heavy weights. Ideal for the small boat that fishes deep and needs a high speed retrieve.

- 200' of premium 150 lb stainless steel downrigger cable
- Boom mounted Rodmaster II rod holder



# LAKETROLLER downriggers

Laketroller downriggers built for the smaller boat. Great for aluminum boats, kayaks and canoes.



## 1071 Clamp Mount

Comes with fully portable engineering grade modified nylon clamp for mounting on the gunnel or transom (2" opening). Great for aluminum boats and canoes. 1 ft. per turn spool.

## Standard Features

- Easy adjust drag brake
- Stainless steel and nylon construction
- 100 ft. of premium 150 lb. stainless steel downrigger cable
- Rugged, re-enforced nylon clamp mount
- Recommended for use with weights under 4lbs.



## 1073 Bracket Mount

Mounting bracket permits mounting on a flat deck surface or on the side of a gunnel or transom. The mounting design gives 360° rotation. Comes with a 241 Side / Deck Mount. 1 ft. per turn spool.



Includes Mini Power Grip Plus line release

## Compact Downrigger Mounts



## 1010

Included with Depthking & Depthmaster, and is designed to work with the 1025 through 1029 optional mounts.

Dimensions : 4 3/4" x 5 5/8"  
Bolting dimensions: 2 5/8" x 4 7/8"



## 1021

Portable mounting option that is great for aluminum boats. Double stainless steel bolts and black anodized aluminum. 2" clamp opening. To be used in conjunction with 1010 mounting bracket.

(1010 mounting bracket not included)

Dimensions: 5 5/8" x 4 3/4" x 3 1/8"



## 1015

For boats with narrow or uneven gunnels. Fits 1050 downriggers. To be used in conjunction with 1010 mounting bracket.

(1010 mounting bracket not included)

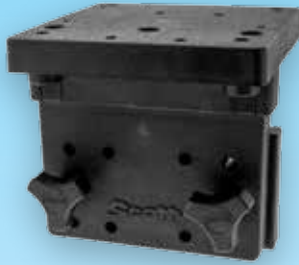
Dimensions: 5 1/4" x 2 1/2"  
Bolting Dimensions: 4 9/19" x 1 5/8"

# DOWNRIGGER mounting systems

## 1025 Right Angle Side Gunnel Mount

For boats with narrow or uneven gunnels. Strong and durable, with quick fastening stainless steel mounting knobs for easy set-up and removal.

Fits all Scotty downriggers (except Laketrollers) and can be used with 1026 Swivel Mount.  
Dimensions : 6" x 6" x 6" (top plate)  
Bolting dimensions: 2"x 4" (side plate)



## 1135 Extra Mounting Knobs only

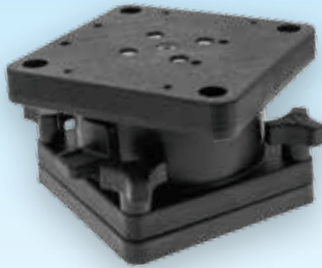
Knobs also fit Scotty rod holders. (Package of 2).



## 1026 Swivel Mount

Gives full 360° rotation with 16 locking positions, quick fastening stainless steel mounting knobs for easy set-up and removal.

Fits all Scotty downriggers (except Laketrollers)  
Dimensions : 5 1/2" x 5 1/2" x 4"  
Bolting dimensions: 3 1/2" x 4 1/2"



## 1035 Extra Mounting Knobs only

Knobs also fit Scotty rod holders. (Package of 2).



## 1027 Rail Mount

Fits up to 1 1/2" round rails, including oval-shaped wooden rails. Easily installed and removed for storage (wooden board not included). Transfers the downward pressure to the boat gunnel.

Fits all Scotty downriggers (except Laketrollers) and can be used with 1026 Swivel Mount.  
Dimensions: 6 1/8" x 7 1/8"



## 1037 Mounting Plate

Extra mounting plate for 1025 Right Angle Side Mount.



## 1036 Mounting Plate

Extra mounting plate for 1026 Swivel mount.

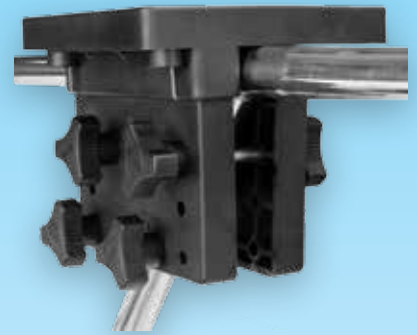
Dimensions: 5 1/2" x 5 1/2"  
Bolting dimensions: 4 1/2" x 3 1/2"



## 2027 Stanchion Mount

The Scotty Stanchion Mount enables you to quickly mount a downrigger to your boats' railing stanchion for extra strength and stability. Strong and durable, with quick fastening stainless steel mounting knobs for easy set-up and removal.

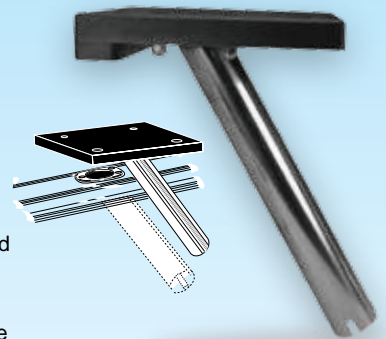
Fits all Scotty downriggers (except Laketrollers) and can be used with 1026 Swivel Mount.  
Dimensions : 6" x 6" x 6" (top plate)  
Bolting dimensions: 2"x 4" (side plate)



## 1028 Gimbal Mount - 9" 1029 Gimbal Mount - 12"

Fits into a boat's flush mount rod holder. Eliminates drilling holes and permanent mounting of downrigger brackets on boat. Made from welded stainless steel and modified nylon for the ultimate in strength and durability. For use in heavy duty factory mounted gimbal rod holders only.

Fits all Scotty downriggers and can be used with 1026 Swivel Mount  
Dimensions:  
1028 6 1/8" x 7 1/8" x 9" x 1 1/2" dia.  
1029 6 1/8" x 7 1/8" x 12" x 1 3/4" dia.



## Pedestal Risers

Made from fibre reinforced nylon and 2" stainless steel tubing for the ultimate in strength and durability. Designed to be used with 1010 compact downrigger mount, 1023 tilt-up downrigger mount and 1026 swivel mount.

Plate Dimensions: 5 1/2" x 5 1/2"  
Bolting Dimensions: 3 1/2" x 4 1/2"



**2606**  
6" Downrigger  
Pedestal Riser

**2612**  
12" Downrigger  
Pedestal Riser

## 1023 Tilt-up Mounting Bracket

Extra mounting bracket for all Scotty tilt-up downriggers. Also used as the exclusive mounting bracket for the Scotty 2500 Line Puller.

Dimensions: 2 1/2" x 4 1/2"  
Bolting Dimensions: 3 3/4" x 1 5/8"



# Downrigger Spare Parts Kits

The Scotty Downrigger Spare Parts Kits contain essential replacement and repair items to "keep you fishing" when using Scotty downriggers. These accessories fit conveniently in a 1 Watertight Emergency Container and include:

- 1 x Single drive belt for Depthpower Downriggers (only in No. 1158 kit)
- 1 x Single drive belt for High Performance Downriggers (only in No. 1159 kit)
- 1 x Snubber
- 2 x Soft Stop Bumpers
- 2 x Large Coastlock Snaps
- 4 x Stopper Beads for Stainless Steel Line
- 4 x Stopper Beads for Braided Line
- 1 x Mounting Knob (for downrigger swivel mounts and rod holders)
- 1x Scotty Decal

## 1158 Depthpower Spare Parts Kit



## 1159 High Performance Spare Parts Kit



## 374 Sure Stop Downrigger Stopper Kit

Attach to your downrigger line directly to the heavy duty swivel, the swivel itself becomes the stopper bead for the auto stop on the downrigger. Works extremely well when using braided downrigger line. Comes with 7 feet of 240lb. test black nylon seine twine, heavy duty in-line swivel and heavy duty coast lock terminal end.



## Stopper Beads

### 1008 Stopper Beads for Stainless Steel Lines

6 nylon stoppers for the auto stop and for locating line releases. (3 each black and yellow)



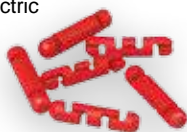
### 1008-24 Stopper Beads for Stainless Steel Lines

24 pack of moulded nylon stopper beads for the auto stop and locating line releases. Available in all black or all yellow



### 2008 Auto-Stop Beads For Braided Line

6 beads for use with braided line for all Scotty electric downriggers



### 2008-24 Auto-Stop Beads For Braided Line

24 beads for use with braided line for all Scotty electric downriggers

# Theft Deterrent Systems

## 3131 Swivel Mount Lock

Works with the 1026 Swivel Mount. Replace one of your mounting knobs with the locking knobs to secure your mount.



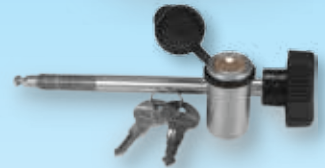
## 3132 Right Angle Mount Lock

Works with the 1025 Right Angle Side Gunnel Mount. Replace one of your mounting knobs with the locking knob to secure your mount.



## 3130 Chassis Lock

Locks the main base bolt to the 1023 mount on 1080-2116 models.



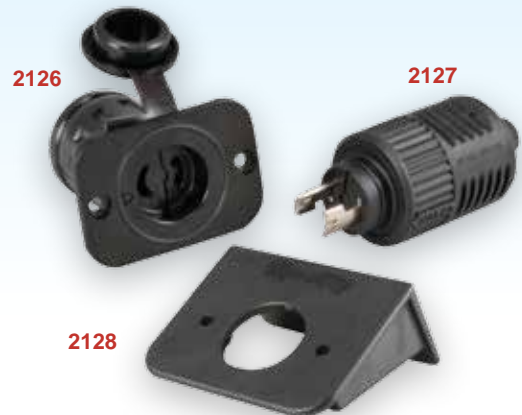
## 3133 Locking Kit

Combination of the 3130 Chassis Lock and 3131 Swivel Mount Lock for complete protection at a package price.

Regular lubrication will extend lock life

**\*This system provides a degree of protection for your Scotty Downrigger and Swivel Mount. It is not designed to, and will not stop the determined and equipped thief.**

## Scotty 12V Plug and Receptacle from Marince®



- Patented Marince® ConnectPro® Plug and Receptacle have weather resistant connections
- Unique locking blades and spring clamping connection for secure electrical contact
- Large contact surface area for maximum conductivity
- Corrosion-resistant, plated brass electrical components
- Marince®'s exclusive Perma-Lock™ terminals, which virtually never need retightening

- 2126** 12V Downrigger Receptacle
- 2127** 12V Downrigger Plug
- 2125** 12V Downrigger Plug and Receptacle
- 2128** Optional Right Angle Receptacle Mount for ConnectPro® Downrigger Receptacle

# STRIKER rod holders



**240** Striker rod holder with 241  
Combination Side/Deck Mount



**246** Striker rod holder with 244  
Flush Deck mount

**239** Striker rod holder without mount  
(not shown)



- Designed and built tough for Muskie, Halibut, Sturgeon, and other big game fish
- Stainless steel reinforced post with a larger opening and easy lock / unlock ring
- The inner support rotates with the rod to instantly remove and “strike” simultaneously

# ORCA rod holders



**400** Orca rod holder with 241L Locking Combination Side/Deck Mount

**401** Orca rod holder with 244L Locking Flush Deck Mount



*Use the 414 Scotty Offset Gears to double your rod holder positions.*

- The inner sleeve opens in one complete motion allowing your rod to be released in an instant
- With one quick motion, your fishing rod is lifted straight out into the fish fighting position
- Completely adjustable both vertically and horizontally
- Fibre reinforced engineering nylon, offers strength, resilience and reliability



# POWER LOCK rod holders



**230** Power Lock rod holder with 241 Combination Side/Deck Mount



**231** Power Lock rod holder with 244 Flush Deck Mount

**229** Power Lock rod holder without mount (not shown)

- Scotty's most popular value-priced, positive-locking, open style rod holder
- Universal cradle holds almost any reel type and has a front locking ring to prevent rod loss while traveling
- Fibre reinforced engineering grade nylon provides strength, resilience and reliability
- Bolting dimensions: 1 5/16" x 3 3/16"



Available in four colors:  
Black , Grey or White

## 414 Offset Gears

The Scotty Offset Gear doubles your rod holder positions for ultimate versatility. Simply place a gear between the rod holder post and your Scotty Rod Holder, adjusting your desired angle of the rod holder before fastening the bolt tight.



All post mount Scotty Rod Holders are fully adjustable up and down, rotating 360°



# TRIPLE rod holder



## 256 Triple Power Lock Rod Holder

Combines three 230 Power Lock rod holders and 362 Triple Permanent Mount with 241 Combination Side/Deck Mount

- Scotty's fully-adjustable, multiple rod holder comes with a built-in lure and accessory rack. This gives you quick access to your lures and tools
- Includes 241 Combination Side/Deck Mount
- Made from fiber reinforced engineering grade nylon



## 257 Triple Mount

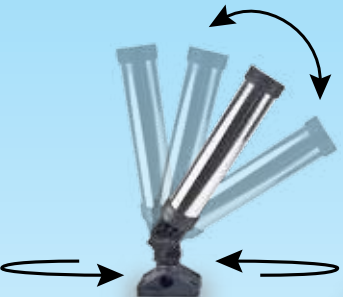
Customize the 257 with the rod holders or accessories of your choice. Includes the 241 Combination Side/Deck Mount (does not include rod holders, accessories)



## 362 Triple Permanent Mount

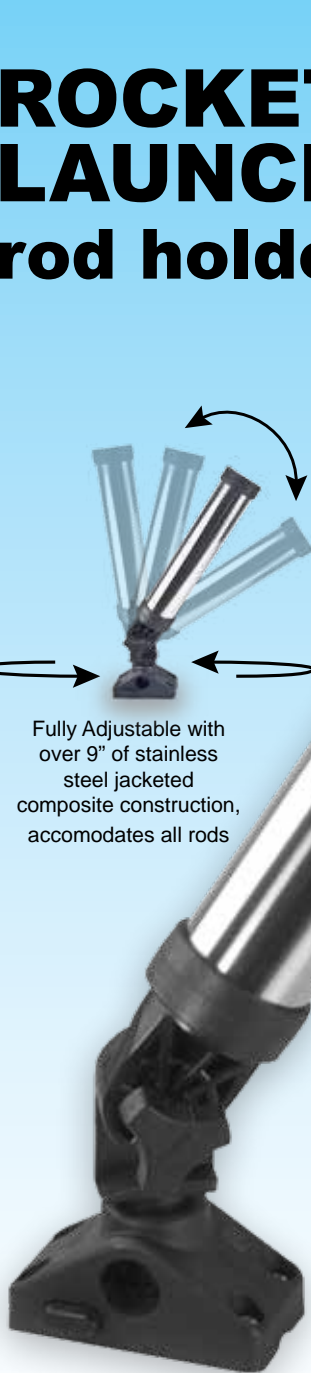
Fastens directly to the deck of your boat. Customize the 362 with the rod holders or accessories of your choice. (does not include rod holders, accessories or mounting post)

# ROCKET LAUNCHER rod holders



Fully Adjustable with over 9° of stainless steel jacketed composite construction, accommodates all rods

Use the 414 Scotty Offset Gears to double your rod holder positions.



**470**  
Stainless steel Rocket Launcher rod holder with 241L Combination Side/Deck Mount

**473**  
Stainless steel Rocket Launcher rod holder with Round Flush Deck Mount (not shown)

**469**  
Stainless steel Rocket Launcher rod holder without mount (not shown)

**480**  
Rocket Launcher rod holder with Gimbal Adapter

**471**  
Stainless steel Rocket Launcher rod holder with 244L Locking Flush Mount



**476**  
Rocket Launcher rod holder with 241 Combination Side/Deck Mount

**478**  
Rocket Launcher rod holder with Round Flush Deck Mount (not shown)

**479**  
Rocket Launcher rod holder without mount (not shown)

**477**  
Rocket Launcher rod holder with 244 Flush Mount

- Tilts up and down, including upright for rod storage when travelling
- Less missed strike opportunities
- Rocket Launcher Inside Diameter: 1.70"
- All post mount Scotty Rod Holders are fully adjustable up and down, with 360° horizontal rotation
- Bolting Dimensions: 1 5/16" x 3 3/16"



Removable gimbal pin



**350**  
Rodmaster II rod holder with 241 Combination Side/Deck Mount

**351**  
Rodmaster II rod holder with 244 Flush Deck Mount

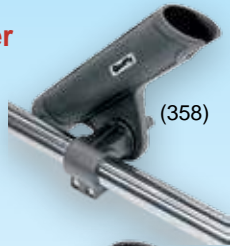
**349**  
Rodmaster II rod holder without mount (not shown)

# RODMASTER II rod holders

- Fibre reinforced engineering grade nylon offers strength, resilience and reliability
- Front end reel slot and removable gimbal pin accommodates any rod and reel combination and is fully adjustable
- 10" tube style rod holder
- Bolting dimensions: 1 5/16" x 3 3/16"

## Downrigger Boom Rod Holder

**358** Rodmaster II clamp-on boom rod holder fits 1 1/4" Scotty downrigger booms



**355** Rodmaster II rod holder bolts through the boom, fitting 3/4" and 1" Scotty downrigger booms



Use the 414 Scotty Offset Gears to double your rod holder positions.



**250**  
Rodmaster rod holder with 241 Combination Side/Deck Mount

**251** Rodmaster rod holder with 244 Flush Deck Mount.

## Downrigger Boom Rod Holder

**258** Rodmaster clamp-on boom rod holder fits 1 1/4" Scotty downrigger booms



**255** Rodmaster rod holder bolts through the boom, fitting 3/4" and 1" Scotty downrigger booms



# RODMASTER rod holders

- 8" tube style rod holder
- Fully adjustable

# BAIT CASTER/SPINNING rod holders



**280**  
Bait Caster/Spinning rod holder with 241 Combination Side/Deck Mount



Use the 414 Scotty Offset Gears to double your rod holder positions.



**281**  
Bait Caster/Spinning rod holder with 244 Flush Deck Mount.

**279**  
Bait Caster/Spinning rod holder without mount (not shown)

- Holds a bait caster reel in a cushioned cradle. A slot in the front of the rod holder allows for a spinning reel to be securely held in position
- The rod holder design has a side mounted flange, which leaves the bottom open - this allows for the rod holder to accommodate trigger grips
- Pistol grip rod butts easily clear the sides of the rod holder for quick rod retrieval. Rod can be secured in holder with a soft latching strap which snaps over the top

## 388 Gear-Head Mount Kit

Great for kayaks! Bring your rod closer to you and snap it in place with the Scotty Gear-Head Mount.



# FLY rod holders



**265**

Fly rod holder with 241  
Combination Side/Deck  
Mount



**264**

Fly rod holder with 244 Flush  
Deck Mount

**260**

Fly rod holder without mount  
(not shown)

- Innovative compact design allows for hands free trolling with a fly rod
- Fully adjustable and includes a safety strap
- Works well with “short butt” fly rods

## **267 Fly Rod Holder with Float Tube Mount Combination**

A fly rod holder combined with adjustable wrap-around straps to use with your float tube or pontoon boat



## **266 Float Tube Adapter**

Mounting braces and adjustable wrap-around straps to use with your float tube or pontoon boat. For use with 241 Combination Side/Deck Mount (241 not included)



# RODHOLDER mounting systems

## 222 Sidewinder

Fast, instant rod removal. 5/16" stainless steel for strength and durability. Soft grips protect rod. (Triggerlock mount included)

## 223 Sidewinder (Bulk)

Rod Holder without mount (not shown)

## 405 Offshore Orca Kit

The 405 is an optional boom mount for all Scotty downriggers.

When adjusted properly, the 405 allows for closer inboard positioning of the Orca rod holder, creating faster and easier rod removal.

Kit Includes:

- 1- Orca Rod Holder body
- 1- Adjustable rod holder extension
- 1- 5/16" x 2 1/4" S.S. Star knob

## 414 Offset Gears

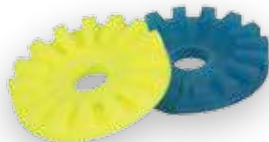
The Scotty Offset Gear doubles your rod holder positions for ultimate versatility. Simply place a gear between the rod holder post and your Scotty Rod Holder, to adjust the angle before fastening the bolt tight.

## 415 Slip Discs

The Scotty Slip Discs allow you to make micro adjustments to your rod holder or any of our Scotty Rod Holder Height Extenders. These discs when placed between the rod holder post and Scotty Rod Holder, allow you to obtain infinite adjustment angles.

## 412 Replacement Rod Holder Post

This replacement post fits all Scotty post mount rod holders and bases.



## 247 Dual Rod Holder

10" tube style rod holder, gives you the ability to fish with 2 rods without mounting another rod holder. Designed for use with the 1026 Swivel Mount. Mounting hardware included. (See page 7 on our Depthpower Propack Models)

## 447 Dual Rod Holder

Features the popular Scotty "Rocket Launcher" rod holders. Adjustable up and down as well as side to side. Rocket Launchers also feature stainless steel jacketed composite construction for extra strength and durability. Designed for use with Scotty 1026 swivel mount. (See page 5 on our High Performance Propack Model)

## 347 Extended Dual Rod Holder

Comes with 2 - 346 Extended Rodmaster II rod holders and gives you the ability to fish with 2 rods without mounting another rod holder. Designed for use with the 1026 Swivel Mount. Mounting hardware included. (See page 7 on our Depthpower Propack Models)

## 237 Triggerlock Mount

For 222 rod holders and 1015 Right Angle Mount.  
Dimensions : 1 5/8" x 4 5/8"

## 238 Rail Mount Adapter

For 222 and 223 rod holders. Works with a 237 Triggerlock Mount to clamp to 7/8" and 1" round rails.

## 340 Track Adapter

Use all Scotty rod holders with 3 1/2" wide track systems. Made from super tough reinforced nylon. Stainless steel fasteners included. Works in conjunction with 241 Mount (241 Mount and track not included).

Fits: Bert's, Trax Tech and more.

## 1135 Replacement Star Knobs

2 replacement star knobs for 1026 Swivel Mount or rod holders.



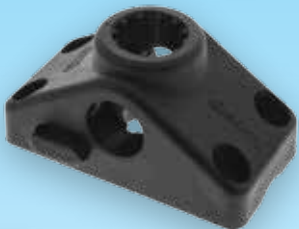
### 241 Combination Side/Deck Mount

Can be mounted on top or side of gunnel. For all Scotty post mount rod holders and accessories.  
Dimensions: 4" x 2" x 2"  
Bolting dimensions: 1 5/16" x 3 3/16"



### 241L Locking Combination Side/Deck Mount

Can be mounted on top or side of gunnel. Lock or unlock easily, with a push of a button. For all Scotty post mount rod holders and accessories.  
Dimensions: 4" x 2" x 2"  
Bolting dimension: 1 5/16" x 3 3/16"



### 244 Flush Deck Mount

Sealed base for watertight applications. Includes a splash cover. For all Scotty post mount rod holders.  
Dimensions: 4" x 2" x 2"  
Bolting Dimensions : 1 5/16" x 3 3/16"



### 244L Locking Flush Deck Mount

Lock or unlock easily by sliding the lever. Includes splash cover. For all Scotty post mount rod holders.  
Dimensions : 4" x 2" x 2"



### 344 Round Flush Deck Mount

Sealed base for watertight applications (such as kayak decks). Includes splash cover. For all Scotty post mount rod holders.  
Dimensions: 3 3/4" diameter  
Bolting Dimensions : 2 3/16" x 2 3/16"



### 444 Compact Threaded Deck Mount

Fits gunnels up to 2" thick. Secures with no exposed hardware using the provided nylon nut. Includes base cap to seal the bottom and splash cover.



### 242 Rail Mount Adapter

Fits 7/8" & 1" diameter round rails, and 1" square rails. For all Scotty post mount rod holders. Works with 241 Combination Side/Deck Mount. Includes all stainless steel fasteners.



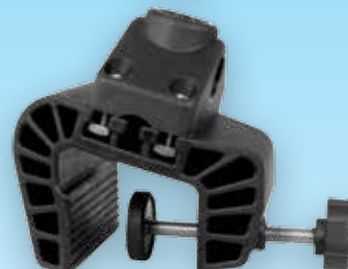
### 248 Oarlock Mount

Excellent for row boats. Use the oarlock socket on your small boat to mount a rod holder or laketroller downrigger. Install or remove in seconds.



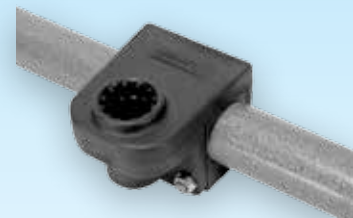
### 449 Clamp Mount

Fully portable mounting option for all Scotty post mount rod holders. Featuring a 241 Combination Side/Deck Mount, the 449 is made from super tough reinforced nylon.



### 245 1 1/4" Round Rail Mount

Excellent for pontoon boats. Position your Scotty rod holder anywhere on your rail. Provides versatile mounting without having to drill more holes in your boat. Stainless steel fasteners (included) hold this tough mount securely in place. Works with all Scotty post mount rod holders. Fits 1 1/4" round or square rails.



### 287 7/8" Round Rail mount

Same great features as the 245, but designed for use on 7/8" round rails.



### 243 1 1/4" Square Rail Mount

Provides versatile mounting without having to drill more holes in your boat. Perfect for boats with limited mounting surfaces. Stainless steel fasteners (included) hold this tough mount securely in place. Works with all Scotty post mount rod holders. Fits 1 1/4" square rails.



### 341 Glue-on Mount

Manufactured from flexible PVC and can be bonded to PVC or Hypalon inflatable boats. Works in conjunction with 241 Combination Side/Deck Mount (not included). Includes all stainless steel fasteners.  
Dimensions: 5" x 7"



Available in two colors: Gray or Black

No. 241, 242 and 244 are available in: Black, Gray or White





### 254 Rod Holder Height Extender

Increase your odds with easier access to your rod and reel. Extends the height of a rod holder by 8 1/2". Works with all Scotty post mount rod holders and accessories. Stainless steel shaft.



*Use the 415 Scotty Slip Discs to make micro adjustments to your rod holder.*



### 259 Rod Holder Height Extender

Increase your odds with easier access to your rod and reel. Extends the height of the rod holder by 6 1/2", allowing for faster access when that fish strikes. Made from super tough reinforced nylon. Works with Scotty post mount rod holders (except 240 Striker.)



*Use the 414 Scotty Offset Gears to double your rod holder positions.*



### 459 Adjustable Rod Holder Extender

Provides the option for you to position your Scotty rod holder into that perfect, custom fish fighting position. Conveniently move your rod holder closer to you on your kayak or your downrigger to eliminate reaching for your rod. Extends the height of a rod holder by 6 1/2".



### 459M Mini Double Ended Rod Holder Height Extender

This is the perfect adaptor to lift your Scotty rod holder off of your deck, or find that absolutely perfect fishing position. The 459M adds an extra 5 1/2" of length to your rod holder post and will greatly improve a difficult or dangerous fishing position. Made from super tough reinforced nylon, the 459M will make fishing from your watercraft even easier.



### 254M Mini Rod Holder Height Extender

The 254M allows you to lift your Scotty rod holder off the deck, allowing full movement and versatility. This works perfectly to eliminate the possibility of your rod interfering with an inconvenient rail position or other obstruction. For use with all Scotty post mount rod holders. Extends the height of a rod holder by 4 1/4".



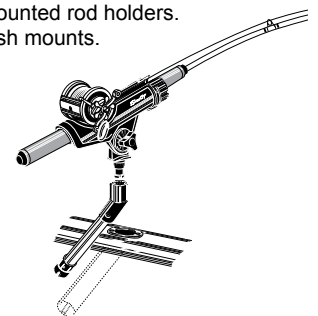
### 427 Multi Angle Adapter

Position your rod to face the fishing action. Combine the 427 with the 459 or 459M Adjustable Rod Holder Extenders to add extra length.



### 253 Gimbal Mount

Allows the use of all Scotty post mount rod holders for boats with factory installed flush mounted rod holders. Fits 9"x1 1/2" flush mounts.





# Gear-Head



## 438 Gear-Head Track Adapter

The Gear-Head Track Adapter quickly slides into place and locks down your post mounted Scotty rod holders and accessories.

Similar to the revolutionary Scotty 428 Gear-Head, this system allows you to quickly change rod holder positions with a simple twist.

You can use your favorite, fully adjustable Scotty rod holder and adjust it to any vertical or horizontal position without having to drill permanent mounting holes.

Designed to fit all kayak track systems, this product is a must for serious kayak anglers.



## 426 Scotty Side Slide Track Adapter

The Scotty Side Slide Track Adapter is a quick, effective means of firmly locking down your post mounted Scotty rod holders and accessories when track is mounted on it's side as opposed to being top mounted.

428



Use the 415 Scotty Slip Discs to make micro adjustments to your Gear-Head and rod holder.

## 428 Gear-Head Mount

Quick and easy, drop and lock system. Allows you to secure and re-position your rod holder with just a twist. Use in conjunction with a Scotty extender to bring your rod closer to you. Can also be used to mount the 240 Striker rod holder onto your downrigger boom.

453



## 453 Gimbal Adapter with Gear-Head

Allows the use of all Scotty post mount rod holders for boats with factory installed flush mounted rod holders. With the Scotty 428 Gear-Head added, this system allows you to quickly change rod holder positions with a simple twist.

429



## 429 Gear-Head Mount Extender

Bring your rod closer to you and snap it into place with the Gear-Head Mount Extender. Customize the 429 with any Scotty rod holder and mount of your choice.

US Patent #7757424

CAN Patent #2584897 Patent Pending

## Scotty Slide Track

High grade black track can be installed on your kayak, canoe or small tin boat. Slide the 438 Gear-Head track adapter onto the track, click in your favorite rod holder and start fishing!

(Gear-Head Mount not included)

**439BK-8** 8" of high grade track.

**439BK-16** 16" of high grade track.

**439BK-24** 24" of high grade track.



**1133 12ft. Premium 12 Gauge 2 Conductor Downrigger Power Wire**



- For wire run lengths of up to 25 feet, use minimum 12 Ga. wire
- For runs of 25 – 40 feet use, 10 Ga. wire
- Manufactured from HEAVY DUTY annealed, tinned copper, providing maximum current flow
- Ultra-flexible for extra protection from vibration or frequent flexing
- CSA and UL approved, RoHS compliant
- Recommend for use with Scotty 1124 - 30 amp inline fuse
- 12 ft in length

**1124 Marine In-line Fuse Holder**

Complete with 30 amp fuse.



**1125 Hella Electric Plug and Socket**

For 12 volt max. 18 amp applications.

**1126 Hella Electric Socket only**

**1127 Hella Electric Plug only**



**\*\* Scotty electric downriggers now come standard with Marinco® ConnectPro plug and receptacle (see products 2125 - 2128)**

**1140 Downrigger Fairlead for 3/4" diameter booms.**



**1141 Downrigger Fairlead for 1" diameter booms.**

**1149 Downrigger Fairlead for 1 1/4" diameter booms.**

**1128 Spare Belt Set**

For 2 belt Depthpower electric downriggers (1 large, 1 small) (2000 models and earlier).



**1129 Single Drive Belt**

For Depthpower electric downriggers (2001 models and later).



**2129 Single Drive Belt**

For High Performance downriggers and Line Puller.



**1132 Replacement Emergency Crank Handle**

For electric downriggers.



**1014 Downrigger Pulley Replacement Kit**

Includes pulley wheel/housing, boom end-cap and adapters for all sized booms.



**1139 Downrigger Pulley Upgrade Kit**

Includes new pulley wheel and housing.



**1142 Downrigger Handle**

For manual downriggers. Includes Bolt and sleeve.



**1024 Counter Cover**

For manual downriggers.



**1145 Depthpower Counter with Base**

For Depthpower electric downriggers.



**1146 Counter with Base**

For manual downriggers.



**2132 HP LCD Counter**

For High Performance downriggers only.



**1131 Electric Downrigger Replacement Lid.**

For Depthpower electric downriggers.



**2131 HP Replacement Lid with LCD Counter**

For High Performance downriggers only.



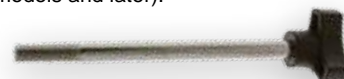
**1034 4 1/2" Downrigger Mounting Bolt**

Approx 4 1/2" length (2000 models and earlier).



**1134 6" Downrigger Mounting Bolt.**

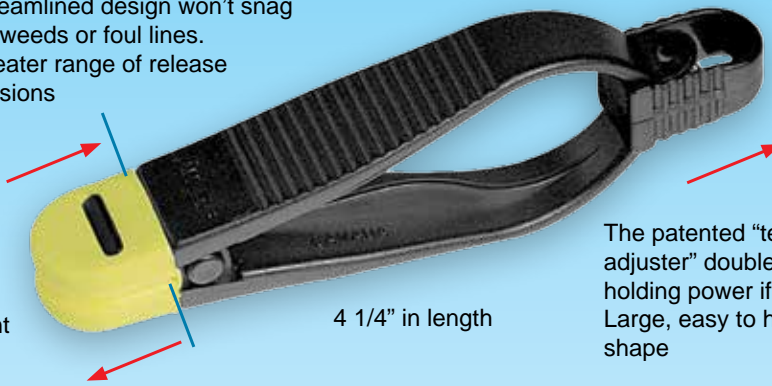
Approx 6" length (2001 models and later).



# Power Grip Plus

Streamlined design won't snag on weeds or foul lines. Greater range of release tensions

Move line in for tighter release, closer to front for lighter release



4 1/4" in length

The patented "tension adjuster" doubles the holding power if needed. Large, easy to handle shape

The line release is the critical link between the downrigger and the fishing rod. If it does not perform properly you will lose both valuable fishing time and fish. The fishing line is gripped between the soft pads and variable release tension is attained by moving the line in or out of the jaws. The line release is attached to either the weight or the cable. The patented "tension adjuster" doubles the holding power if needed.

**1170** 18" heavy monofilament leader with cannonball snap. Included with all downriggers.



**1176** "Stacker" - 6" Leader.

**1179** "Stacker" with 30" leader.

**1191** "Stacker" with 40" leader.

**1192** "Stacker" with 60" leader.



**1171** 18" leader with stacking, self-locating snap.

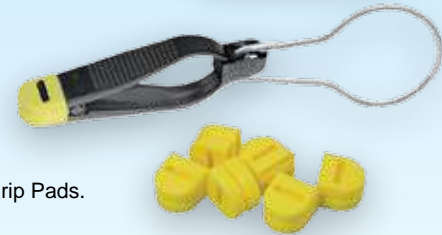
**1172** 30" leader with stacking, self-locating snap.

**1173** 48" leader with stacking, self-locating snap.

**1178** 60" leader with stacking, self-locating snap.



**1177** Planer Board Snap.



**1190** 6 Replacement Power Grip Pads.

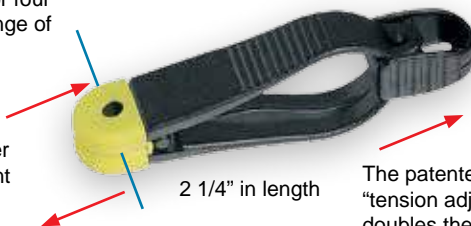


## Mini Power Grip Plus

A compact version of the Power Grip Plus.

Streamlined design won't snag on weeds or foul lines. Greater range of release tensions

Move line in for tighter release, closer to front for lighter release



2 1/4" in length

The patented "tension adjuster" doubles the holding power if needed

**1181** 18" wire leader with cannonball snap.



**1182** Planer Board - 4 pack.



**1180** 18" wire leader with stacking, self-locating snap.

**1183** 30" wire leader with stacking, self-locating snap.



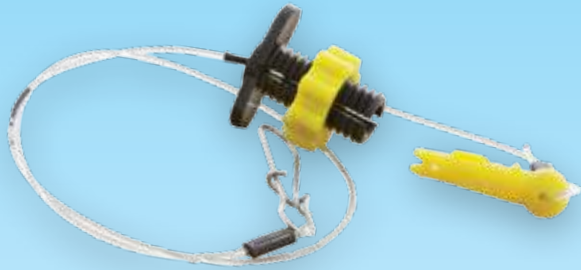


# KINGPIN

Adjustable Hairtrigger Release Clips

A fully adjustable tension release clip. With a simple turn of the yellow nut you can increase or decrease the amount of desired release tension. One of the only release clips on the market that works exceptionally well with braided fishing line.

**1020** Original Kingpin Release clip attaches directly to the downrigger line. Simple and effective!



**1020** 18" heavy duty leader with cannonball snap.

**1022** 3 extra pins for all Kinpin Adjustable hairtrigger release clips.



**Great for use with braided fishing line!**

**1032** 18" leader with stacking, self-locating snap.

**2021** 30" leader with stacking, self-locating snap.

**1031** 48" leader with stacking, self-locating snap.



## Snapper Original Line Releases

The fishing line is gripped between the soft pads and variable release tension is attained by moving the line in or out of the jaws.



**1041** 18" Leader with stacking, self-locating snap.

**1049** 30" Leader with stacking, self-locating snap.

**1040** 48" Leader with stacking, self-locating snap.



**1042** 18" Leader with cannonball snap .

**1045** 7" wire cable leader.

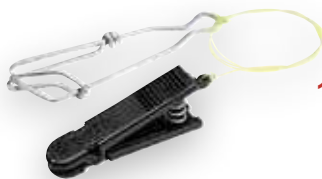
**1043** Planer Board Release.

**1160** Snapper "Stacker" - 6" leader.



## Mini Snapper Original Line Releases

**1046** Mini Snapper 18" leader with stacking, self-locating snap.



**1047** 18" leader with cannonball snap.

**1048** Planer Board - 4 pack.



### 1155 Self-Locating Trolling Snaps

2 nickel/ silver trolling snaps - large, approx. 5" overall length.

**1156** 2 stainless steel trolling snaps - small, approx. 3" overall length.



### 1005 Downrigger Release

The original plug type release.

### 1006 Extra Pins

For 1005 line release (3 per pack).



**200 lb. test - Low Drag Microfilament Premium Power Braid Downrigger Line**



Our latest high tech, low drag, black microfilament braided downrigger line. Custom manufactured braid offers the ultimate in strength, consistency and durability. Includes Coastlock Snap and a Soft Stop Bumper.



- 2700k** 200 ft. of 175 lb. test
- 2701k** 300 ft. of 175 lb. test
- 2702k** 400 ft. of 175 lb. test



**250 lb. test - Premium Microfilament Heavy Duty Braided Downrigger Line**

Braided line offers the ultimate in strength, consistency and durability. Made with Low Stretch Fiber. Use of braided downrigger line helps combat electrolysis around your fishing gear. Includes Coastlock Snap and a Soft Stop Bumper.

- 2200k** 200 ft. of 250 lb. test
- 2201k** 300 ft. of 250 lb. test
- 2202k** 400 ft. of 250 lb. test



**175 lb. test - Low Drag Microfilament Power Braid Downrigger Line**

Braided line offers the ultimate in strength, consistency and durability. Made with Premium Braided Downrigger line. Use of braided downrigger line helps combat electrolysis around your fishing gear. Includes Coastlock Snap and a

- 2300k** 200 ft. of 175 lb. test
- 2301k** 300 ft. of 175 lb. test
- 2302k** 400 ft. of 175 lb. test



**180 lb. test - High Performance Premium Stainless Steel Downrigger Cable**

- 2401K** 300 ft. of 180 lb. test
- 2402K** 400 ft. of 180 lb. test
- 2403K** 500 ft. of 180 lb. test

Includes:  
1 Coastlock snap with swivel, 3 sleeves, 1 soft stop bumper and 1 stainless steel thimble.



**150 lb. test - Premium Stainless Steel Downrigger Cable**

- 1000** 200 ft. of 150 lb. test
- 1001** 300 ft. of 150 lb. test
- 1002** 400 ft. of 150 lb. test

Add a "K" to these product numbers to include an 1153 Terminal Kit.



**1157 Stainless Steel Thimble Kit**

2 stainless steel thimbles and brass connector sleeves.



**1004 Connector Sleeves**

10 black brass sleeves for joining wire line or for locating line releases.



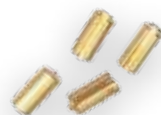
**1011 Double Line Connector Sleeves**

10 double black brass sleeves for joining wire or heavy monofilament line.



**1007 Release Clip Locators**

10 split brass crimps for locating line releases.



**1038 Cable Coupler**

Attaches the snap hook to the downrigger cable quickly and easily without the use of metal crimps. Built in rudder eliminates weight spin for longer cable life. Remove rudder when used with finned weights.



**1009 Two Insulating Downrigger Weight Swivel Hooks**

With connector sleeves.



**1154 Terminal Kit**

1 swivel hook (No.1009), 1 stainless steel thimble, 1 soft stop bumper with connector sleeves.



**1151 One Coastlock Snap with Sampo Swivel**

200 lb. test stainless steel with premium Sampo ball bearing swivel with connector sleeves.



**1150 Two Coastlock Snaps**

225 lb. test stainless steel with barrel swivel with connector sleeves.



**1152 Two Large Coastlock Snaps**

350 lb. test stainless steel with barrel swivel.



**1153 Terminal Kit**

1 coastlock snap with swivel (No.1150), 1 soft stop bumper, 1 stainless steel thimble with connector sleeves.



**1039 Soft Stop Bumper**

4 pack. For downrigger snap hooks.



## Trap-ease

Crab and prawn trap roller for easy retrieval. Fits Scotty post rod holder mounts for convenient mounting and versatile positioning. Tough reinforced nylon and rigid design gives the Trap-ease ultimate strength.

**750** Trap-ease includes 241 Combinations Side/Deck Mount.

**749** Trap-ease without mount.

- Large size roller with pivoting head makes for smooth operation
- For use with rope up to 1/2" diameter
- Long arm for extended reach over gunnel
- Adjustable arm angle



Recommended for non-commercial, single trap use.

## 420 REEL E-Z Rod Handle

Offers better rod control while fighting big game fish. Easily adapts to most rods. You can mount the rod handle to the reel by replacing the lower reel brace underneath. The Reel E-Z rod handle has 3 height adjustments depending on the reel. Stainless steel fasteners included.

**Great for jigging!**



## Vented Bait Jars

A rugged container for storing bait or for protecting bait in a crab or prawn trap. The quick unscrew lid and vented body have the right size slots to send the bait smell out, yet protect the bait from most parasites.

**670** 1/2 L. White, vented bait jar w/lid.

**672** 1/2 L. Red, vented bait jar w/lid.



## Bait Jars

A rugged container for storing bait or for protecting bait in a crab or prawn trap. The quick unscrew lid has the right size slots to send the bait smell out, yet protect the bait from most parasites.

**650** Jar, 1/2 litre, with lid, white.

**652** Jar, 1/2 litre, with lid, fluorescent red.

**654** Jar only, 1/2 litre, white.

**657** Jar, 1 litre, with lid, fluorescent red.

**651** Jar, 1 litre, with lid, white.

**653** Lid only for bait jar, white.

**656** Lid only for bait jar, fluorescent red.



## 425 Rod Butt Cushion

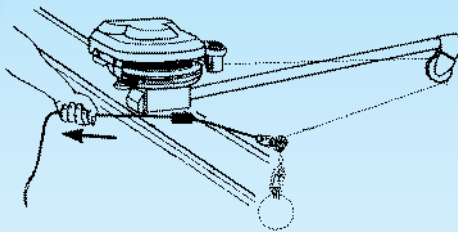
More comfortable and easier to use than most fighting belts. Universal rod butt tube allows simple rod to rod transfer.



Available in : Blue, White, or Black

### 3025 Downrigger Weight Retriever

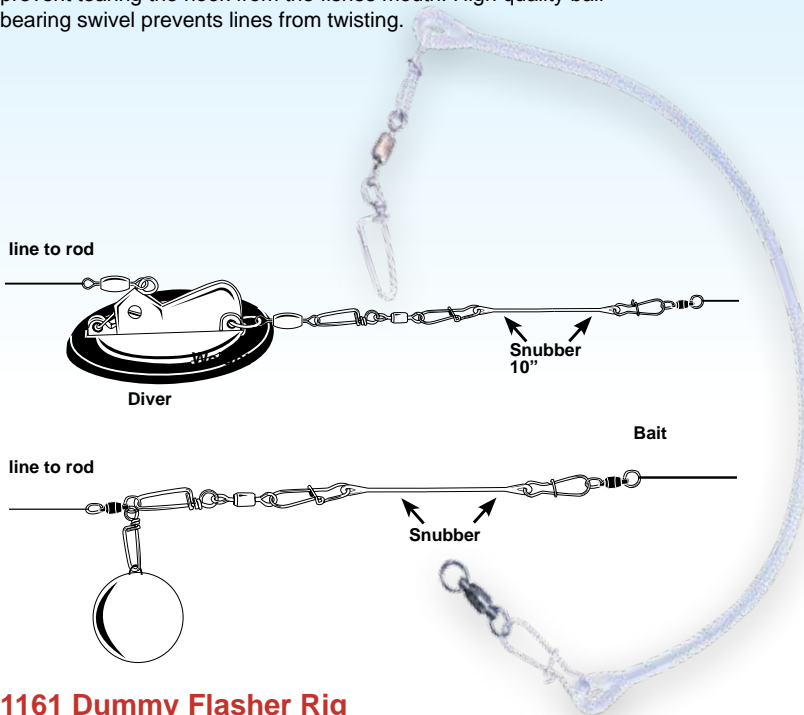
Great helper and safety precaution for the downrigger fisherman. Brings weights in for rigging lines and releases without having to lean out over a gunnel. Heavy-duty long-wearing nylon fairlead.



**\*\*A MUST FOR ALL DOWNRIGGERS\*\***

### 373 Diver Snubber

The diver snubber allows a certain amount of stretch that will prevent tearing the hook from the fishes mouth. High quality ball bearing swivel prevents lines from twisting.



### 1161 Dummy Flasher Rig

Quickly attach extra flashers or dodgers to your downrigger line. 2 per pack.



### Weights

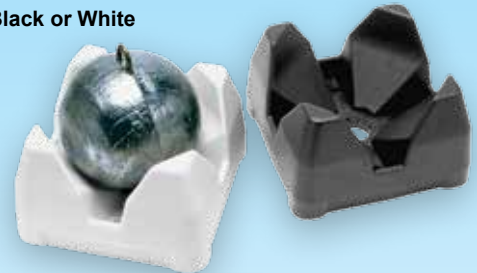
- 1017** 3 lb. Cannonball, finned lead weight.
- 1018** 7 lb. Round Lead Weight.
- 1019** 10 lb. Round Lead Weight.



### 3022 Weight Mate 2 Pack

Holds your downrigger weight securely.

Available in: Black or White



### Downrigger Weight Hook

Convenient for holding your weight while you land the fish.

- 1147** For 1" booms.
- 1148** For 1 1/4" booms.



### Trolling Snubber

Place between your downrigger cable and weight. The Scotty Trolling Snubber absorbs shock, provides electrical insulation and helps prevent snags. Easy to grip. Allows quick connection to your downrigger cannon ball.

- 370** Trolling Snubber with Sampo® ball bearing swivel and trolling snap (weight not included).

- 371** Trolling Snubber with trolling snap only.





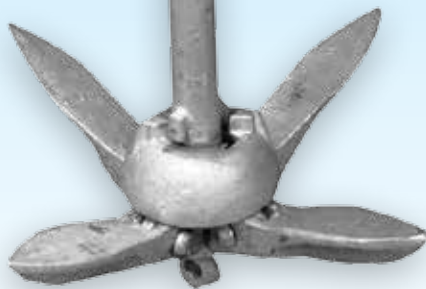
### Anchor Lock

Anchor release system for small boats in still-water fishing situations. Easy lock and release action allows anchor line adjustments with only one hand. For use with rope up to 1/2" diameter. Tough construction and roller bearing for smooth, quiet operation.

**276** Anchor Lock includes 241 Combination Side/Deck Mount.

**277** Anchor Lock includes 244 Flush Deck Mount.

**278** Anchor Lock with fixed permanent mount.



### 136 Paddle Clip

Use our new paddle clip to secure your net to your boat or for gear storage in your garage. Just clip and it's out of your way!



### Aluminum Landing Nets

Aluminum alloy handle and hoop with tough corrosion-resistant finish. Strong 1 1/4" diameter handle retracts for compact storage. Guaranteed quality – 5 year warranty.

**206** 30" solid hoop, 4 foot handle.

**207** 30" solid hoop, 6 foot handle.

**215** Replacement net bag.



### 797 Anchor Kit

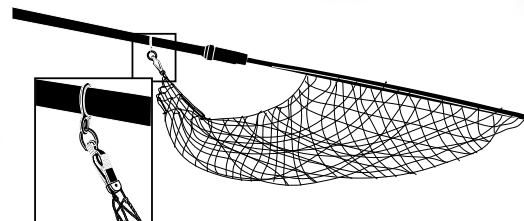
Kit Includes:  
 1- 50 ft (15m) Premium Nylon Line  
 1- 1.5 lb (0.6 kg) Folding Anchor  
 1- Watertight Buoyant Container - doubles as a bailer  
 1- Nylon Snap Hook, for easy attachment to vessel

For still water use only.



### 210 Net Minder

Simply slide the rubber ring down the net handle, clip the bottom of the net into the release and the net will release from the clip when a fish is caught in the net.





### 368 Universal Sounder Fishfinder Mount

The new Scotty Universal Sounder Mount uses a multi pattern universal top plate and the Scotty post mount design for quick removal and infinitely adjustable rotation. Simply fasten your sounder bracket to the top plate, then lock down the sounder mount into your favorite Scotty mounting system. Locked, loaded and ready to start catching fish!



(Sounder, No. 241 Side/Deck Mount and sounder fasteners not included. Only intended for use with fish finders and other marine electronics.)

### 268 Float Tube Fishfinder Mount

Adapt a fishfinder to your float tube or pontoon boat. Includes transducer bracket and 6' strap.

Fits or can be adapted to most fishfinder brands including: Lowrance, Eagle, Humminbird and Garmin.



### The Original "Black" Box

Maximize your downriggers' fishing potential!

It has been proven that many species of fish have a strong sensitivity to electrical energy in the water. Salmon, trout and sharks are among these. Galvanic action causes electricity to flow from your boat to your downrigger cable, which creates an electrical field around your boat. The Black Box controls the voltage on the cable, maintaining the productive fishing range of positive 0.1 volt D.C. to 0.9 volt D.C. on up to six downriggers. The dial can be tuned to the desired level to suit your target fish. The Black Box can be operated in the continuous voltage mode, or the "pulsing mode" that cycles the charge on and off every 5 seconds - often triggering a strike.



### 1201 Black Box (digital with pulse mode)

Includes wiring harness and stainless steel contact sleeves for 2 downriggers. Water resistant housing and easy installation.

**1210** Extra wire sleeve and wire harness.

**1211** Extra contact sleeve only.



For a copy of the Black Box booklet, please call or email Scotty. See back cover for information.

### 269 Swivel Fishfinder Mount Kit

Uses the patented Scotty post mount design for quick removal and infinitely adjustable rotation. Includes 241 mount and stainless steel fasteners.

Can be used with 242 Rail mount, 449 Clamp mount or 254 Height extender for added mounting options.

Fits or can be adapted to most fishfinder brands including: Lowrance, Eagle, Humminbird and Garmin.

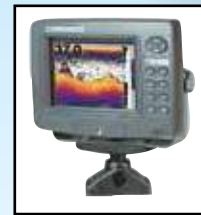


**270** Swivel Fishfinder Mount with 244 Flush Deck Mount.



### 272 Swivel Fishfinder Mount

Swivel Fishfinder Mount only, mounting bracket not included.



### 327 Fender Ring

2 per pack. Use the Fender Ring to quickly attach a fender to your Scotty rod holder mounts. Easy to insert and remove. Inside diameter of ring is 7/8".



### 225 Gaff/Bonker

This 24 1/2" heavy duty, combination gaff/bonker also doubles as a Georgia Strait chinook measurer and fish release tool. Stainless steel construction with non-skid grip.

**226** Gaff/Bonker with same features as 225, but with 30" overall length.



## Cup Holders

For cans, coffee mugs and insulated sleeves. Convenient accessory rack to hang lures and tools. **Easily removable.**

**310** - Drink Holder with bulkhead/gunnel mount.

**309** - Button Mount - 2 pack.

**311** - Drink Holder with button mount and rod holder post mount.



Available in:  
Black or White.

## 125 Scotty Tumbler

Clear 12oz. cup, that is virtually indestructible. Dishwasher safe.



## 990 Knife Sharpener

The ultimate sharpening device! Safe, easy to use and can conveniently be stored in a tackle box or galley. Tungsten Carbide blades can be rotated to extend the life of the sharpener.



## Strongback Oar Lock

1/2" straight shank. Moulded nylon over stainless steel core. Low friction nylon creates smooth and quiet operation. Competitively priced against standard galvanized and bronze models.

**102** 2 1/8" Inside dimension (standard oars).

**104** 1 3/4" Inside dimension (small oars).



## 3010 Snap Hook Key Chain

Available in: Black, Blue, Purple, Green, Red, Orange, Yellow, and Glow.



## 103 Oar Lock Post

Adapts all Scotty rod holder mounts to a 1/2" oar lock socket.

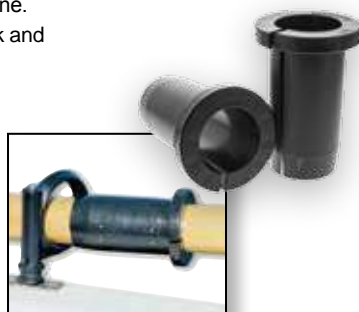


## 101 Oar Collar

Made of rugged, flexible polyethylene. Adjustable and long wearing. Quick and easy to install (fasteners included).

Can be trimmed for smaller oars.

Available in: Black or White.



## 590 Snap Hooks

6 per pack. Tough nylon snap hooks are great for a multitude of tasks.

\*\*Also available in bulk

See back of cover for contact details

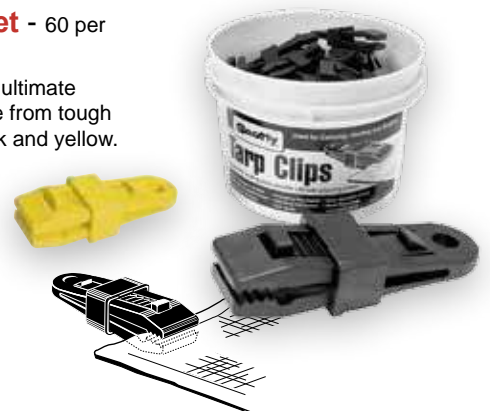


## 300 Tarp Clip - 4 per pack

## 301 Display Bulk Bucket - 60 per bucket

Powerful locking jaws provide the ultimate grip! Quick and easy to use. Made from tough reinforced nylon. Available in black and yellow. Unlimited uses include:

- Tarps, temporary shelters
- Boat and automobile covers
- Motor home awnings
- Emergency tent repairs
- Swimming pool covers
- Golf towels





Scotty accessories and mounts sold separately

### 455 Bait Board

- Quickly mount the Bait Board to any Scotty post mount
- Store all of your fishing favorites with the built-in lure and accessory rack, giving you quick and easy access to everything you need
- Exterior tray walls let you cut bait and prep lures conveniently in a contained space with tools at your finger tips
- Mount the Scotty Camera Mount and all purpose Cup Holder directly onto your Bait Board saving you valuable boat space
- Keeps knives, pliers and hook sharpeners in place between use for added safety
- Easily elevate the board with the help of any adjustable rod holder extender, such as the 429 Scotty Gear Head Mount Extender
- For great portability when kayaking, mount the Bait Board to our new 453 Gimbal Mount Adapter



### 302 Kayak Stabilizers

Feel secure and stable while fishing with Scotty Stabilizers attached to your kayak. Easily inflatable bladders offer over 30 lb. of extra buoyancy and Scotty's unique assembly system makes installation and removal quick and easy! The 30" long x 8" diameter pontoons are made of heavy PVC coated outer shell material.



Each Stabilizer Kit includes:

- 2 - Inflatable pontoons
- 2 - 28" anodized arms w/posts
- 4 - 241L Locking Combination Side/Deck Mounts
- 2 - 280 Baitcaster rod holders



### 135 Portable Camera/Compass Mount for your sport or standard camera

The Scotty Portable Camera Mount is fully twistable, turnable, rotatable and best of all, instantly portable. Locks down a sport or standard camera without needing a special adaptor. Fits into all Scotty post mount systems which means we have you covered no matter what you want to mount it to. Mount on any pole from 5/8" - 1 3/8" in diameter. The versatile top plate also works great for mounting a compass or any other device that mounts on a flat surface.



## Kayak Pump

Stainless steel piston rod for strength and durability. Comes with pump float and Lifetime Warranty.

**544K** 13 1/2" Kayak Pump with float.

**545K** 21" Kayak Pump with float.

**546** Float only for Kayak Pumps.



## 794 Paddle Sports Accessory Kit w/ 544K Hand Pump

Comes with a kayak pump, throw bag, lifesaver whistle and a reusable mesh bag.

## 136 Paddle Clip

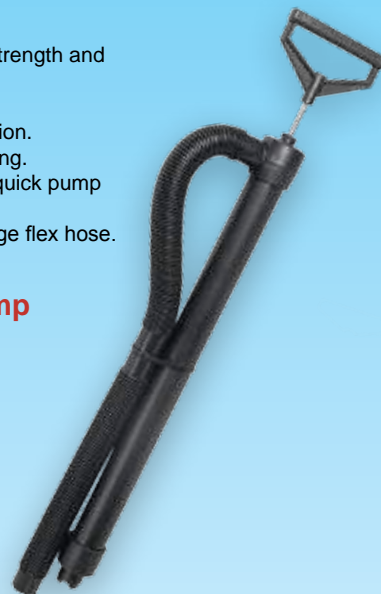
Sometimes simple is the best design for a product and the Scotty Paddle Clip is not only simple, it's STRONG! We spread out the mounting points, opened up the size of the mounting holes, beefed up the sidewalls and made sure it securely held every paddle we clipped into it.

Mount it in a convenient location on your watercraft and... no worries, this low profile clip will take care of holding your paddle! Grab a couple extra Scotty Paddle Clips for tidy gear storage in your garage.



## Hand Pumps

- Stainless steel piston rod for strength and durability.
- Lifetime Warranty.
- Large handle for easier operation.
- Easily disassembled for cleaning.
- 1 1/2" barrel diameter means quick pump outs.
- Includes 24" of 1 1/8" black bilge flex hose.



### 544 13 1/2" Bilge Pump

13 strokes per gallon.

### 545 21" Bilge Pump

7 1/2 strokes per gallon.

### 548 34" Bilge Pump

3 1/2 strokes per gallon.

## Well Nuts

**133-4** 4 pieces per package.

**133-16** 16 pieces per package.

**133-100** 100 pieces per package.

Securely fasten a multitude of products onto thin walled structures with ease! Well Nuts work by expanding inside a pre-drilled hole, securely anchoring your mount. Neoprene mounting nuts effectively seal out dirt and grime at the assembly joint. Stainless steel fasteners included.



## 132 Extra Long Grip Mounting Rivets

10 pieces per package.

These structural rivets are an excellent solution for mounting hardware where you don't have access to the back side of a fastener.

Great for mounting to thin-walled watercraft such as kayaks, these rivets are designed to "butterfly" open to spread the mounting load over a greater area.

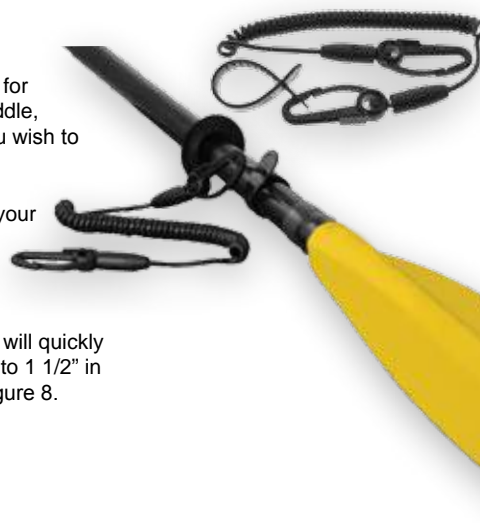


## 130 Paddle Leash

The Scotty Paddle Leash now has a **new, improved system** for attaching our leash to your paddle, fishing rod or anything else you wish to secure.

Simply wrap the strap around your paddle, thread it through itself, snap the Scotty hook onto it and...voila, you're done!

Our 6 foot self retracting leash will quickly and safely secure anything up to 1 1/2" in diameter. Also comes with a figure 8.



## 828 Folding Sea Light

- Waterproof/corrosion resistant bright light, visible up to 2 miles, operates for up to 8 hours with 2 alkaline batteries
- Light weight pole, 42 inch overall length, c/w unique drop-down adjustment feature
- The mounting base included is the new model 241L combination top/side mount, c/w push button for easy installation/removal
- 42" tall light also includes a highly visible orange flag edged with 3M reflective tape. The flag is attached to the pole using non corrosive nylon grommets and tie wraps



## SEA-LIGHT for Paddling Safety

Visible up to 2 miles. Waterproof and corrosion resistant. Runs up to 8 hrs. on 2 "AA" batteries. Removable light is portable and can easily be attached to a life jacket.

- 823** Includes 20" pole and 241 combination side/deck mount.
- 824** Includes 20" pole and 244 Flush Deck mount.
- 825** Includes suction cup mount and safety leash (No pole).
- 826** Includes 20" pole and 344 Round Flush Deck mount.
- 827** Includes 20" pole and 444 Compact Flush Deck mount.



## 789 Watertight First Aid Kit

85 pieces total. Contains 16 essential items, all in a rugged watertight buoyant container. Also included is a bonus Lifesaver #1 Safety Emergency Whistle



## 774 Watertight Emergency Equipment Container

For dry storage of flares, emergency rations, matches, etc.  
Net buoyancy – 1 kg. (2.2 lb.).  
Now translucent to see interior contents



## 779 Small Vessel Safety Equipment Kit

Contains four of the items required by. The Canadian Coast Guard for vessels up to 8 meters.

Kit Includes:

- 1- 15 metre buoyant heaving line
- 1- Clear Bailer (watertight container)
- 1- Sound signaling device (pealess whistle)
- 1- Watertight flashlight (batteries not included)



## 780 Lifesaver #1 Safety Whistle

The world's most advanced all-purpose safety whistle. Designed by search and rescue professionals. The synthetic peas will not absorb moisture or freeze. Works when soaking wet – clears instantly.

- ABS plastic will not stick to your mouth in cold weather
- Double chambered for multiple pitches
- Waffled sure-grip
- Meets anti-choking standards for children.
- Large tooth-grip for hands free use
- Lip-seal prevents loss of air in extreme cold



## 784 Lifesaver #1 Safety Whistle - Pealess Whistle

Same as above but pealess for Coast Guard requirements.

## 793 Throw Bag

- 50' x 9/32" 550lb test
- 15m x 7mm 250 kg test
- Braided MFP polypropylene floating rope
- Bright orange nylon and polyester self-draining bag c/w adjustable strap & 3M reflective safety band



## 795 Water Tight Flashlight

Uses 2 "AA" batteries for its ultra bright Xenon bulb (batteries not included).



### IT'S THE LAW!

Please check your local regulations regarding safety equipment.

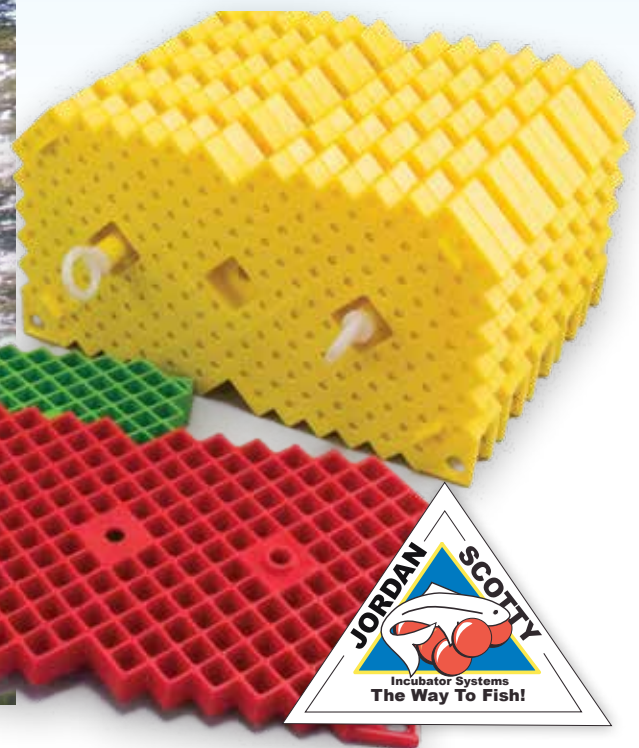
# Re-Establishing And Enhancing Streams All Over The World



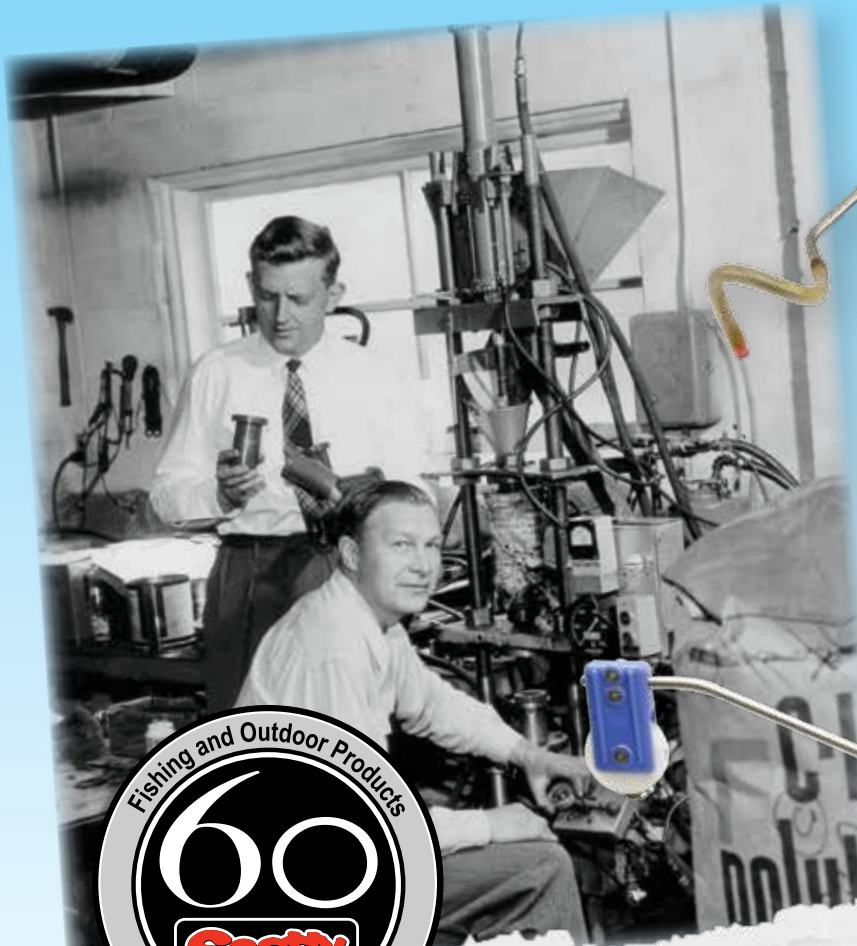
The Jordan/Scotty incubator, sometimes referred to as the Salmon Condominium, is a scientifically designed and tested plastic incubation unit and was developed to provide an efficient aid in the stream incubating of salmon or trout eggs. The unique design either eliminates or minimizes most of the problems experienced by natural spawning. Fungus infection is virtually eliminated and eggs are protected from predators and silt suffocation. Pilot testing indicates that survival rates from egg to fry is often better than 90% as compared to natural spawning survival rates of between 5% and 20%.

Eggs are placed into individual chambers of larger "cassettes" which can hold thousands of eggs. These units are placed into the gravel and covered. Without further maintenance, the egg grows and matures to a swimming fry at which time it leaves the incubator.

The critical need to enhance our stocks is well documented. Natural spawning has declined dramatically over the past 50 years for many reasons. Many of our spawning areas no longer exist. Many of the spawning areas that still exist are only partially effective and many of our original Salmon stocks are now extinct. The need for increased Salmon enhancement programs by volunteers has never been greater. The availability of the Jordan/Scotty Incubator, a simple yet effective incubation unit, can be of great help for our precious Salmon stream stocks and their eventual recovery. We urge you to become involved.



# Over 60 Years of Excellence...



- Original Release Clips



- Original Stainless Steel Rod Holder



- Blayney Scott (standing) and Dacre Scott

## Scotty

CLASSICS

- Original Blue Manual Downrigger



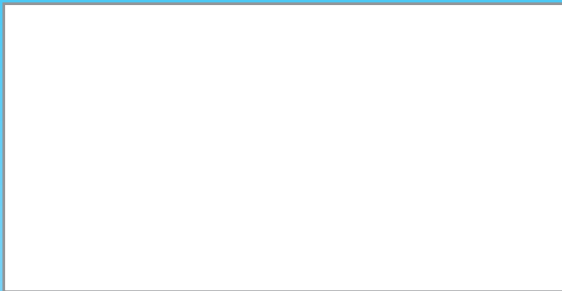
In 1952, **Blayney Scott** started a small company in Victoria, British Columbia, that pioneered the use of plastics in the manufacturing of salmon fishing lures and other marine products. From humble beginnings, Scott Plastics Ltd. has evolved to produce thousands of products under the Scotty trademark which are sold to the fishing, marine, outdoor and firefighting industries worldwide. Now with markets all over North America, Europe, Australia, New Zealand and beyond, Scotty products are gaining a reputation for being top quality, but still affordable in the face of rising production costs.

The Scotty trademark has become recognized to mean product excellence. The total commitment to quality, fair pricing and unmatched service means our customers everywhere can expect reliability and satisfaction from every product that carries the Scotty name.

From production to community involvement, the Scotty name carries pride and distinction in the fishing, marine, outdoor and firefighting industries. All products are backed by years of manufacturing experience and the highest quality customer service. Excellent vendor support and a superior product have made Scotty a leader in the fishing industry. This company with small business origins has big heart and big plans. Scotty: The Way to Fish!



**The Way To Fish<sup>®</sup>**



For information regarding factory authorized service centers, parts, and other information please contact:

Scotty Fishing & Outdoor Products  
2065 Henry Ave West  
Sidney, British Columbia  
Canada V8L 5Z6

Phone: (250) 656-8102  
Toll Free: 1-800-214-0141  
Fax: (250) 656-8126  
Em: [scotty@scotty.com](mailto:scotty@scotty.com)

Edition 15

Trust Scotty for  
over 60 years



[www.scotty.com](http://www.scotty.com)

## New To Scotty



### Depthpower Spare Parts Kit



### Sure Stop Downrigger Stopper Kit



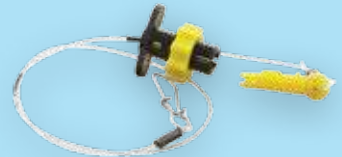
### Scotty Slide Track Adapter



### Universal Sounder / Fishfinder Mount



### Kingpin Hairtrigger Releases



### 200 lb. test - Low Drag Microfilament Premium Power Braid Downrigger Line



### Well Nuts

